

HEALTH AND SAFETY WARNING

Members and visitors should take reasonable care for their own health and safety and cooperate with walk leaders and others to maintain safe practices. If you bring children you must supervise them at all times.

Take care if you have to share a path with cattle or sheep, cross a road or climb over stiles, and please stay well away from all cliff top edges as cliff falls are frequent and very dangerous.

Please also be aware of overhanging branches, brambles, and do not eat or suck wild berries, fruits, fungus, leaves or grasses. You are strongly advised to wear appropriate footwear. Most walks are on uneven grass paths, and the obvious risks are of pot holes, tripping, and slipping especially after rain.

*Affiliated Member
of Sussex Wildlife
Trust*



In a friendly atmosphere, the Society aims to promote interest in plants, birds, and animals and how the groups interact with each other.

It was formed in 1959 to provide interest and knowledge of our local flora and fauna and is affiliated to the Sussex Wildlife Trust. We have a group of Recorders available to whom records may be sent and where help may be obtained in the identification of species.

In Spring, Summer and Autumn there are gentle walks organised for which transport can be arranged.

In Winter there is a programme of illustrated talks on Tuesday afternoons at St Luke's Church Centre, Walmer Road at 2.15pm and walks as indicated.

A magazine is published three times a year in March, July and November.

For further information

Visit our website

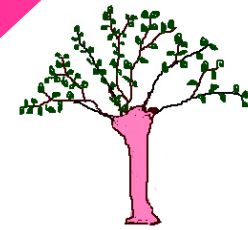
www.seafordnaturalhistory.org.uk

01323 893526

or e-mail

enquiries@seafordnaturalhistory.org.uk

Current membership - £20 per year,
plus £10 per additional member at same address
Visitors to meetings or walks £3



Seaford Natural History Society Outdoor Programme

2019



DATE	LEADER	LOCATION	MAIN FOCUS	PARKING/MEETING POINT	GRID REF
2 nd April 2.00 pm	Sarah Ward	Foreshore at Bastion Steps, Peacehaven.	Following the tide out, to Beachcomb, collect litter and explore Rockpools as time and inclination takes us.	Bastion Steps CP At the seaward end of Steyning Avenue on the South side of the A259. See additional information sheet for more details.	TQ 4114 0072
16 th April 11.00 am	Michael Blencowe	Woods Mill	Short talk on the history of the reserve, then walk to see April highlights.	Woods Mill CP, then gather at the Mill See additional information sheet for more details.	TQ 2184 1378
30 th April 10.00 am	Chris Brewer	Belle Tout/ Shooters Bottom	Spring Flowers	Belle Tout CP* See additional information sheet for more details.	TV 5677 9542
14 th May 5.15 am	Bob Self/ Derek Barber	Abbots Wood	Dawn Chorus, Nightingales Possible rough tracks.	Abbot's Wood CP* See additional information sheet for more details.	TQ 5577 0719
4 th June Members only outing	Chris Bentley	Rye Harbour	Day Trip.	See separately circulated Booking Form	
11 th June 10.00 am	Dave Morgan	Cradle Valley	Orchids Some steep sections and rough tracks.	High and Over CP See additional information sheet for more details.	TQ 5091 0110
25 th June 10.00 am	Nick Lear	Knowlands Farm	Woodland Walk especially good for butterflies.	Go down the lane to the farm, and park in the field on the right, just before the pond. See additional information sheet for more details.	TQ 4212 1686
9 th July 10.00 am	Natasha Sharma	Crowlink	Pond Dipping/Bioblitz With the option of doing additional species ID work at Birling Gap in the afternoon.	Crowlink CP* – Free for National Trust Members by using their membership card at the ticket machine. See additional information sheet for more details.	TV 5499 8790
23 rd July 10.00 am	Derek Barber	Old Lodge Nature Reserve	Dragonflies and general exploration of this Nature Reserve, with some hills and rough tracks.	Old Lodge CP, Ashdown Forest See additional information sheet for more details.	TQ 4699 3063
6 th August 9.00 am	Steven Teale	Abbots Wood	Catching and identifying moths which have been trapped overnight.	Abbot's Wood CP* See additional information sheet for more details.	TQ 4634 0051
20 th August 10.00 am	Andy Mitchell	Ouse Estuary Nature Reserve	An exploration of this reserve, including areas not open to the public.	Tide Mills CP	TQ 4634 0051
3 rd September 10.00 am	Alex Stephens (South East Water)	Arlington Reservoir	A self-guided walk around the reservoir with preliminary introductory talk.	Arlington Reservoir CP*	TQ 5283 0748
17 th September 7.00 am & 10.00 am	Bob Self/ Derek Barber	Seaford Head LNR	Birdwatching on two similar walks, each starting from South Hill Barn.	South Hill Barn CP	TV 5045 9806

CP*= pay car park

NB: Unless otherwise stated walks will last 2-3 hours, mostly on uneven ground - and sorry but NO DOGS are allowed

The additional information sheet can be found on our website at www.seafordnaturalhistory.org.uk